

ENGAGER training school
Mobilising data for energy poverty
research and action

Dr Harriet Thomson
3rd June 2019

Action introduction



- ENGAGER = European Energy Poverty: Agenda Co-Creation and Knowledge Innovation
(ENGAGER 2017-2021)
- Develops and strengthens an international community of researchers and practitioners focused on combating energy poverty
- Primarily supports research networking within and beyond Europe
- Four working groups: integration – indicators – dialogues – innovation

WG2 and WG3



- WG2: Indicators – Developing an operational European energy poverty framework
 - Examine key detection issues such as how existing measures capture the groups susceptible to energy poverty, taking into consideration needs, practices, infrastructure etc.
- WG3: Dialogues – Co-producing emancipatory research and practice
 - Generating a hub for European dialogues between ENGAGER, on the one hand, and relevant EU policy institutions, NGOs, academia, businesses and the social innovation community, on the other.

History of the community



- Two applications made by Professors Brenda Boardman, Christine Liddell, and Sharon Turner (pre-2015)
- Three applications from a team led by Professor Stefan Bouzarovski and Dr Harriet Thomson (2015-2017)
- Growing community of secondary proposers from across Europe and beyond (now 200+ members)

Energy poverty



- Understood as the inability to secure a socially- and materially-necessitated level of energy services in the home (Bouzarovski and Petrova, 2015)
- May affect more than 50 million households in Europe (Thomson and Snell 2012)
- More than incomes and energy efficiency (Bouzarovski and Tirado Herrero 2017)
- Energy poor typically come from vulnerable groups, live in inefficient homes with inadequate energy services

Context



- Energy poverty is becoming a major scientific and policy challenge across Europe and the world
- EU Energy Poverty Observatory
- Clean Energy Package provisions
- More research and recognition in Central, Eastern and Southern Europe
- New challenges: low-carbon transitions, participation, wider energy services

Research questions



- How can EP be understood and eradicated via multidimensional research and policy?
- What are the conceptual and methodological complexities that underpin EP?
- What is the best way of overcoming limited knowledge on EP in Europe?

Research co-ordination objectives



- Create a trans-disciplinary analytical approach to understand EP
- Develop a common framework for determining the extent of EP
- Bring into being an active platform for European dialogues on researching and addressing EP
- Generate multiple forms of innovation by forging inter-sectoral connections

Capacity-building objectives



- Increase the technical and scientific competence of network participants
- Produce new partnerships, exchange opportunities, and collaborations
- Generate leadership opportunities for under-represented researchers
- Identify and follow up specific funding avenues for new projects

Group	Activities	Year (quarters)				Year (quarters)				Year (quarters)				Year (quarters)			
		0	3	6	9	12	15	18	21	24	27	30	33	36	39	42	45
All	Kick-off meeting	R															
	MC meetings			R				R				R				R	
	CG meetings				R/F				R/F				R/F				R/F
	WG consolidation																
	WG meetings			R				R				R				R	
	Website		E														
	Conferences				C												C
	Workshops		S		S		S		S		S		S		S		S
WG1	Review						R										
	ECI events			C												C	
	Papers/briefs							P/B					P/B				P/B
WG2	Review								R								
	STSM			R				R				R					
	Training schools				M				M								
	ECI events															C	
	Toolkit												T				
	Papers/briefs				P/B				P/B				P/B				
WG3	Training school							M									
	Toolkit												T				
	Papers/briefs			B				B				B				PB	
WG4	Database					D											
	Toolkit																T
	Papers/briefs			B				B				B				PB	
	Case studies			A			A				A						
	STSM				R				R				R				

Core group



- **Professor Stefan Bouzarovski (Chair)**
- **Slavica Robic (Vice Chair)**
- Dr George Jiglau (Science Communication Manager)
- Dr Nikolas Katsoulakos (STSM Co-ordinator)
- Dr Ute Dubois (WG1 lead)
- Dr Anca Sinea-Lonca (WG1 lead)
- Dr Harriet Thomson (WG2 lead)
- Dr Siddharth Sareen (WG2 lead)
- Dr Sergio Tirado Herrero (WG3 lead)
- Marlies Hesselman (WG3 lead)
- Professor Katrin Grossmann (WG4 lead)
- Dr Eleonora Gaydarova (WG4 lead)



MOBILISING DATA FOR ENERGY POVERTY RESEARCH AND ACTION

First ENGAGER training school

Institute of Environmental Science and Technology (ICTA)

Universitat Autònoma de Barcelona (UAB)

3-7 June 2019

Background



- Beyond **the state of the art** on energy poverty data and knowledge.
- Predominance of **quantification methodologies and indicators**
- Potential of **unmapped, untapped sources of data**.
- Participatory, democratic forms of **knowledge co-production**, e.g., citizen science.

Aim and objectives



- Re-assessing the **epistemology** of energy poverty
 - How do we know what we know about energy poverty?
 - What alternative forms of knowledge can be articulated?
 - How can knowledge be mobilised for transformative action?
- **Objectives** of the training school
 - Skills for mapping, evaluating and making use of unconventional data sources
 - Tools for realising the potential of untapped data for enhanced research, communication and action

Practical guiding questions



- What can be learned from your data?
Limitations/gaps/blindspots in the data you use
- (How) can other/additional forms of data be used within/to complement your current research/advocacy work?
- What can be improved in terms of data presentation for purposes of storytelling, influencing policy making, advocacy, etc.?

Training school schedule and speakers

DAY 1

Setting the scene

DAY 2

Science as practice

DAY 3

Mapping unusual data

DAY 4

Infographies & Barcelona

DAY 5

Policies & storytellin'

MONDAY June 3rd	TUESDAY June 4th	WEDNESDAY June 5th	THURSDAY June 6th	FRIDAY June 7th
ICTA-UAB	ICTA-UAB	ICTA-UAB	ICTA-UAB	Lleialtat Santseca
9:00 AM				
10:00 AM	EXPERTISE, PARTICIPATION, EVIDENCE Andrea Saltelli	MAPPING ENVIRONMENTAL CONFLICTS Daniela del Bene	COMMUNICATION THROUGH DATA VISUALIZATION AND INFOGRAPHICS Gemma Busquets	SSH EVIDENCE FOR POLICY IMPACT Rosie Robinson
11:00 AM	Arrival of participants	MAPPING NON-CONVENTIONAL PARTICIPATORY DATA Cait Robinson		USING DATA IN STORY TELLING Marilyn Smith
12:00 PM				
1:00 PM				
2:00 PM	LUNCH BREAK	LUNCH BREAK	LUNCH BREAK	LUNCH BREAK
3:00 PM	SETTING THE SCENE Harriet Thomson, Sid Sareen, Sergio Tirado	CITIZEN SCIENCE AND PARTICIPATORY RESEARCH Patrik Oskarsson	(continued) Cait Robinson	ENERGY POVERTY POLICIES IN BARCELONA (ABD/Ecoserveis)
4:00 PM	A CONVERSATION WITH BRENDA BOARDMAN	MAPPING ENERGY POVERTY VULNERABILITY IN PORTUGAL (J Gouveia)	COLLECTIVE ENERGY POVERTY ACTION IN BARCELONA Alliance against Energy Poverty	GROUP WORK PRESENTATION OF ASSIGNMENTS
5:00 PM	Harriet Thomson, Sergio Tirado	GROUP WORK	FIELD VISIT TO SANT ROC BADALONA	
6:00 PM	ICEBREAKER ACTIVITY			FAREWELL DRINKS AND SNACKS
7:00 PM	WELCOME DRINKS AND SNACKS			
8:00 PM			NETWORKING DINNER	

Trainees in figures



- 65 applicants – 30 trainees
 - Selection criteria: geographical spread, early career/non-academic background, gender and no previous participation in ENGAGER.
- 17 EU and neighbouring countries (13/30 from ITCs): AL, CY, DE, DK, ES, FR, HR, HU, IE, IT, LT, MK, PL, PT, UK
- 20/30 are female
 - 12/19 trainers are female
- 7/30 trainees work in non-academic organisations
 - 6/19 trainers do not work in academia

Groupwork teams



Groups are as mixed **as possible**.

They all have:

- a) someone working in a non-academic organisation
- b) with a Spanish/UK background

...and from thereon ensuring that every group has a

- c) beginner data-indicator related person
- d) advanced data-indicator related person
- e) gender / health / global south /community participation person
- f) north-south EU divide /male & female

Groupwork teams

GROUP 1

Irene González Pijuán
Brandi Jess
Lina Marauskaite
Gianluca Trotta
Arion Sauku

GROUP 2

Nora Feldmar
Breffni Lennon
Roberto Barrella
Coralie Robert
Hyerim Yoon

GROUP 3

Ana Mostecak
Jan Pojar
Audrey Dobbins
Anais Varo
Vivien Kizilcec

GROUP 4

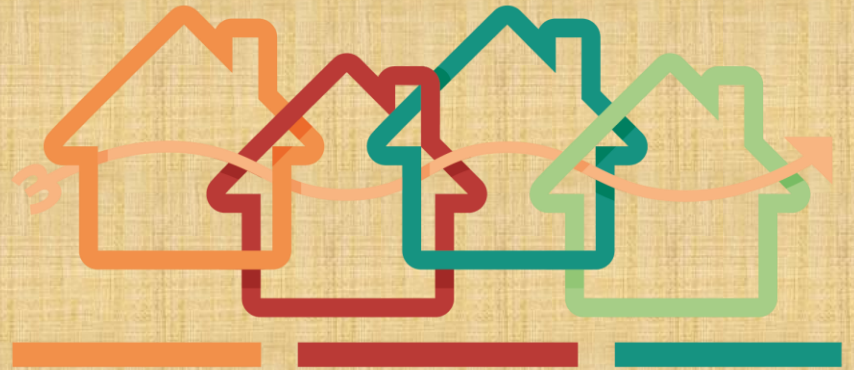
Lira Hakani
Laura Oliveras
Ana Stojilovska
Marielle Feenstra
Florian Hanke

GROUP 5

Victoria Pellicer
Liliia Karpinska
Pedro Palma
Ana Zsofia Bajomi
Miguel Nuñez-Peiro

GROUP 6

Richárd Rác
Ioanna Kyprianou
Katherine E. Mahon
Leona Sandmann
Salisu Isihak

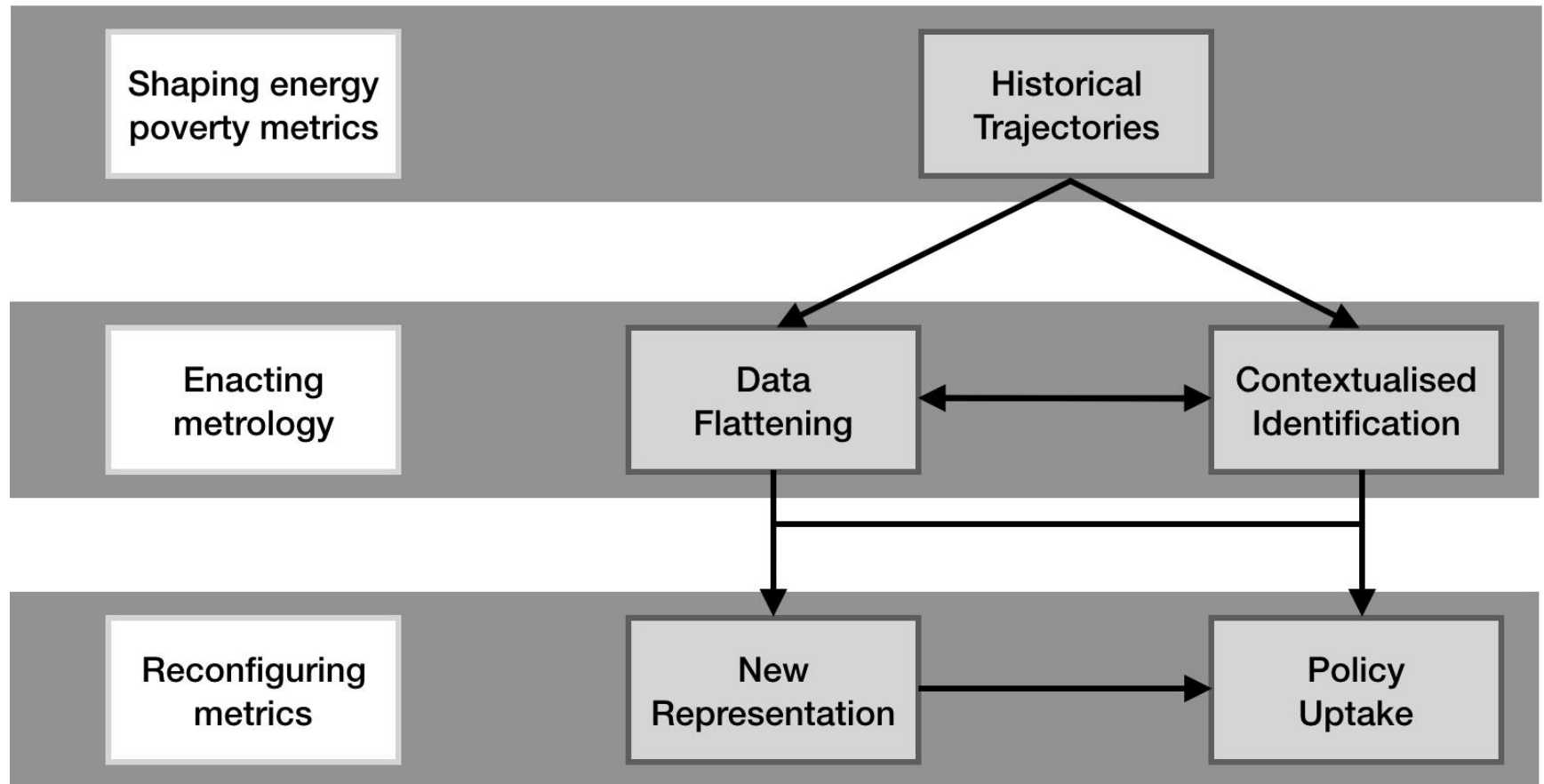


ENGAGER training school 1

Mobilising data for energy poverty research and action

Dr Siddharth Sareen
3rd June 2019

An analytical framework with five dimensions for energy poverty metrology research



Prospects and limits of indicators: Scalar perspectives on energy poverty metrics (manuscript in review) Siddharth Sareen, Harriet Thomson, Sergio Tirado-Herrero, João Pedro Gouveia, Ingmar Lippert and Aleksandra Lis

Group work:

Group-specific focus



- Groups 1A & 1B
 - Tools and techniques to measure and monitor EP data at multiple scales
- Groups 2A & 2B
 - Scope for adjusting and refining existing datasets to be more EP relevant
- Groups 3A & 3B
 - Data-driven approaches for visualising EP to inform and impact policies

Group work: Group-specific task



- Write 500 words as a group
- Deliver by Friday COB (email Sergio)
- Capture content that cuts across sessions
- Retain your assigned group thematic focus

Group work: Session 1

instructions



- Day 1 inputs
 - Introduction
 - Setting the scene
- Day 2 inputs
 - Expertise, participation, evidence
 - Citizen science and participatory research
- **16:15-17:30 Groupwork session 1**
 - **State-of-the-art (what we know)**
 - **Barriers to implementation (why it is not used)**

Group work: Session 2

instructions



- Day 3 inputs
 - Mapping environmental conflicts
 - Mapping non-conventional participatory data
 - Mapping energy poverty vulnerability
- **16:15-17:30 Groupwork session 2**
 - **Pathways of change:**
 - Immediate (2020)
 - Intermediate (2025)
 - Long-term (2030)

Group work: Session 3

instructions



- Day 4 inputs
 - Communication through data visualisation and infographics
 - Energy poverty policies at the urban scale
 - Collective energy poverty action
- Day 5 inputs
 - Social sciences and humanities evidence for policy impact
 - Using data in storytelling
- **14:00-15:30 Groupwork session 3**
 - Coordinate and design 1 slide each
 - Practice speaking 2 min. per person

Group work: Presentations



- Uniform format:
 - 5 slides, 1 per person, 2 min. per slide
 - 10 min. per group + 10 min. discussion
- **16:00-18:00 Presentation slots**
 - 20 min. per group (order 1A, 1B, 2A, 2B, 3A, 3B)
- Slides
 - (1) State-of-the-art (2) Barriers to implementation
 - Theories and pathways of change:
 - (3) Immediate (4) Intermediate (5) Long-term

Session 1: Slides 1-2

What we know (state-of-the-art)	Why it is not used (barriers to implementation)
Group 1: Methods and metrics	
Group 2: Continuity and innovation	
Group 3: Communication and impact	
Cross-cutting: scale, data type, etc.	

Session 2: Slides 3-5

Immediate (2020)	Intermediate (2025)	Long-term (2030)
Targets		
Sub-targets		
Step 1		
Step 2...		



Thank you!

www.engager-energy.net

www.twitter.com/engagercost

www.facebook.com/energypovertyaction/